

# Xibita

Bambu

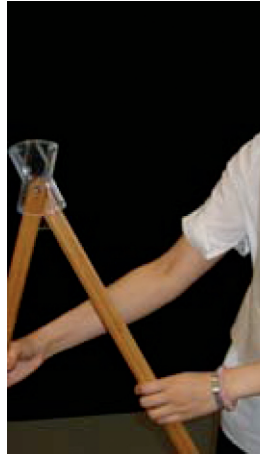
ENVIRONMENTAL  
BANNER STAND

## SET-UP GUIDE

---

## STEP 1: GETTING STARTED

---



Expand frame by pivoting bottom legs in centre hub.

---

## STEP 2: THIRD LEG

---

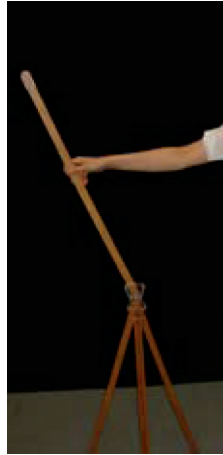


Insert Bambu leg into angled channel on rear of centre hub.

---

### STEP 3: TOP ARMS

---



Insert first Bambu upper arm into channel on top of centre hub. Ensure that hook on the end connector faces the front.

---

### STEP 4: TOP ARMS

---

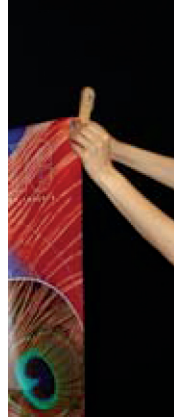


Repeat to install second Bambu arm.

---

## STEP 5: TOP BAR

---

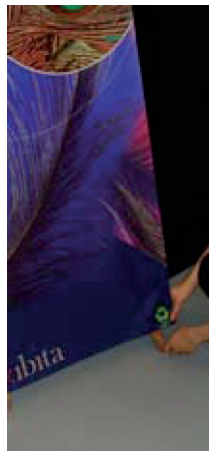


Attach banner by inserting hooks on end connectors into grommets at each corner of the banner. Start at the top.

---

## STEP 6: UPPER POLE

---



Gently flex frame to hook the bottom grommets at each corner to the hooks.

# Xibita

---

ideas@xibita.com | 1 800 663 1737

[xibita.com](http://xibita.com)

---

*Beyond Ordinary*